

Recycling of composite materials: Cross-border approach towards a circular economy

RECY-COMPOSITE

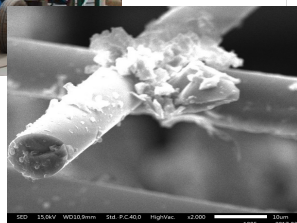
Mechanical recycling

- **Upstream processing:** shredding, grinding
- Crushing and screening
- Size and morphology characterization

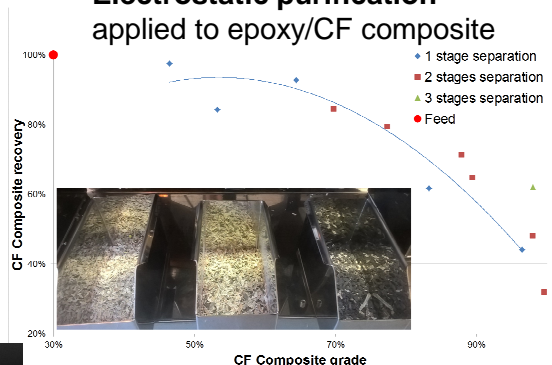


Polyester/GF

- fine fraction (enriched with resin)
- coarse fraction (enriched with fibres)



- **Electrostatic purification** applied to epoxy/CF composite



Mechanically recyclable thermoplastic (TP) composite

- TP long fibres substituting thermoset/GF

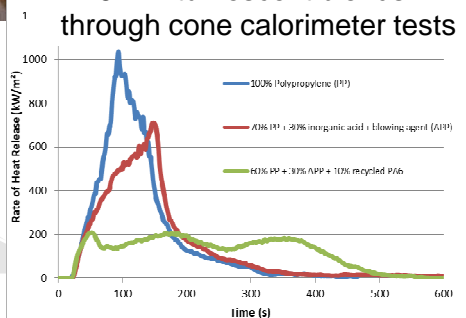


Materials recovery

- PA6/GF composites (automotive sector)
- Formulation of **intumescent systems:** use of recycled PA6 as carbonization agent



- Synergistic effect of recycled PA6 in intumescent blends through cone calorimeter tests



Chemical recycling: solvolysis

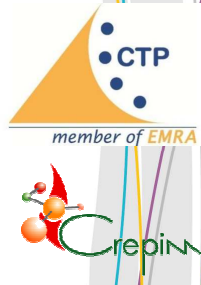
- 1 L autoclave reactor
- Matrix (e.g. epoxy) decomposition under subcritical conditions
- Valuable short carbon fibres



Project Leader



Partners



Contact

GOFFIN Benedicte
Project Manager
Certech

contact@recycomposite-interreg.eu

Project funded by



Research and innovation

More info

www.interreg-fwvl.eu
@InterregFWVL

FEDER FUNDING 1 590 278 €
TOTAL COST 3 190 556 €

The programme is co-financed by the European Regional Development Fund